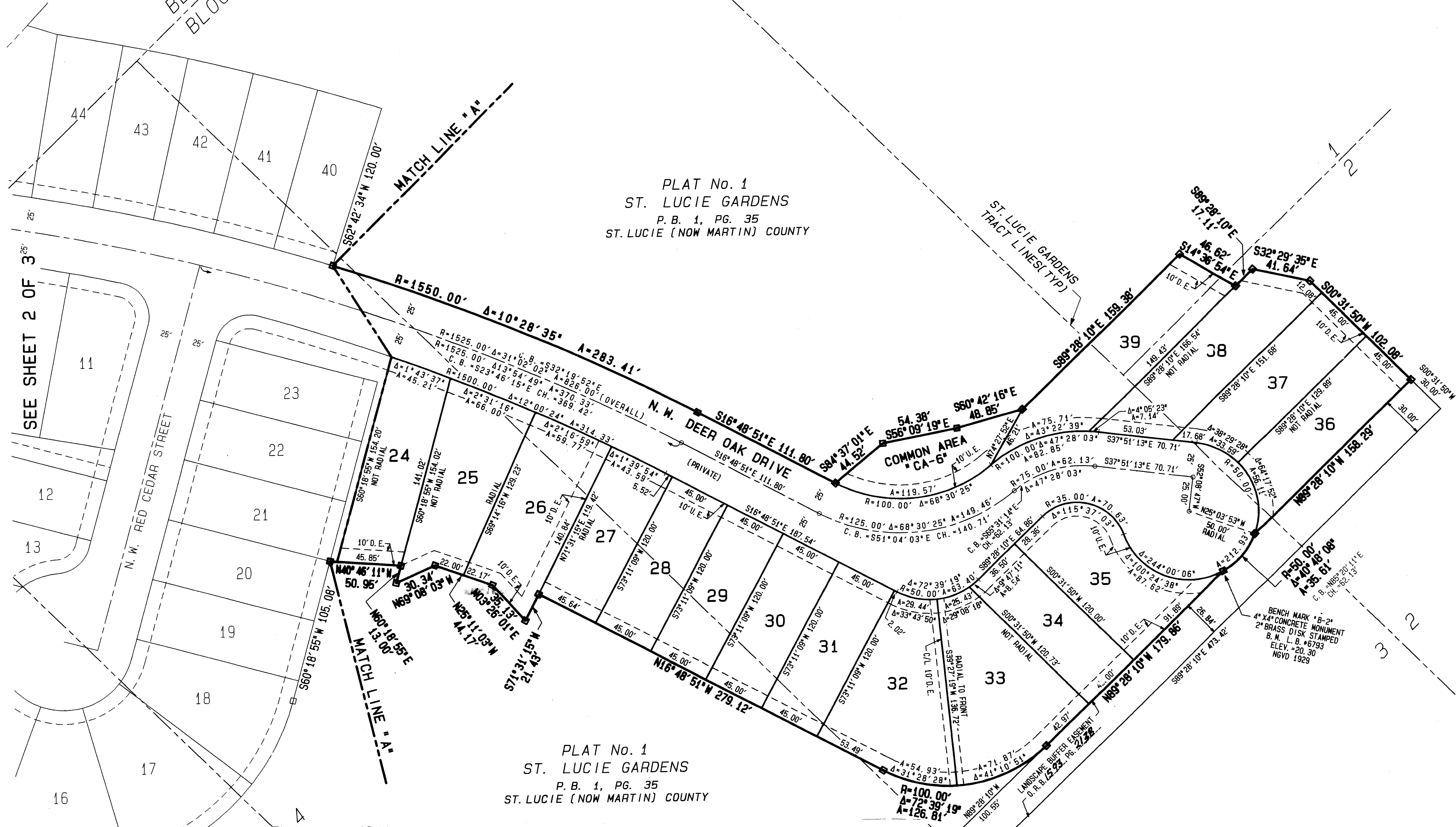
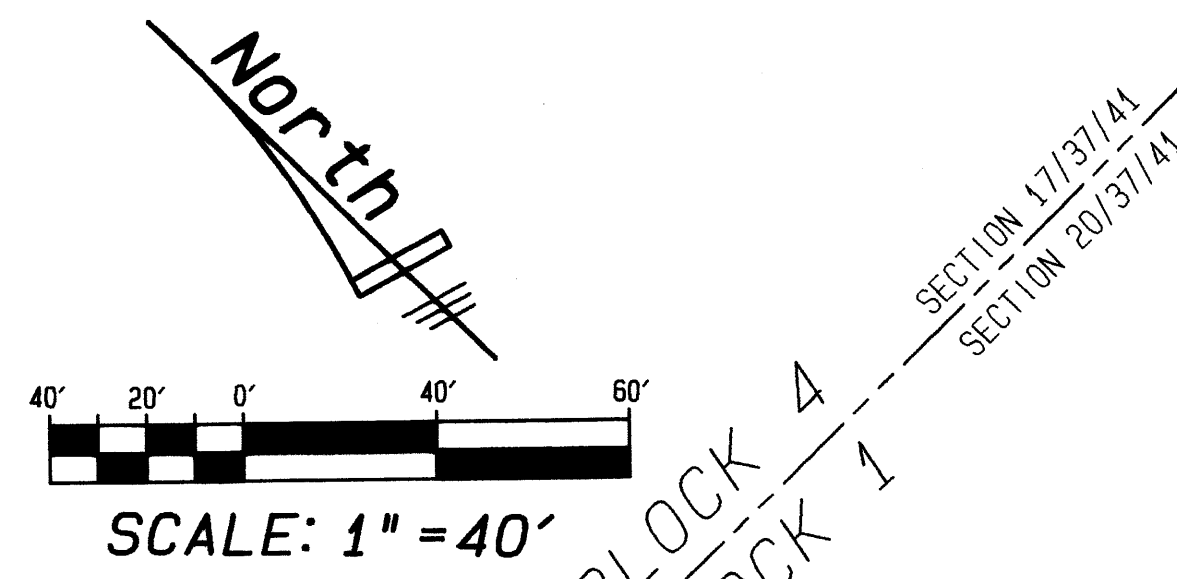
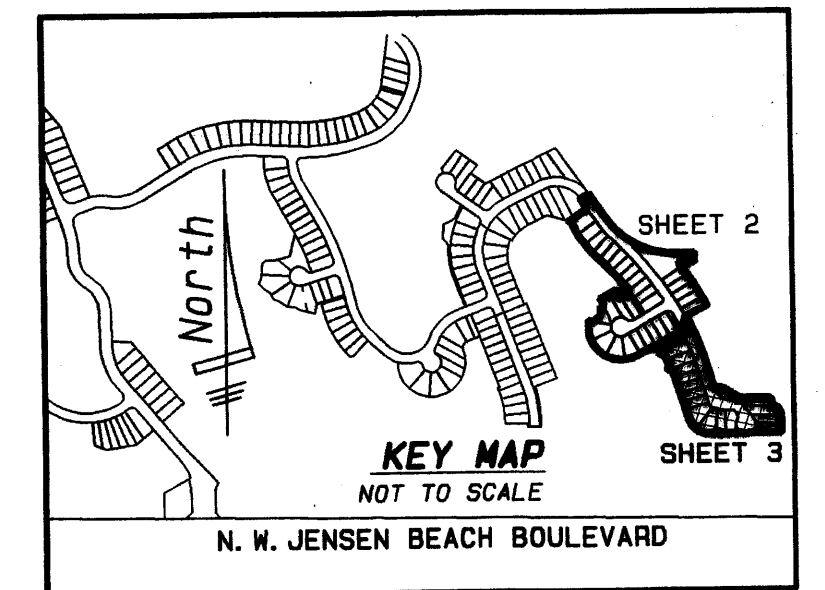


JENSEN BEACH COUNTRY CLUB PLAT NO.7 OF WEST JENSEN, A P.U.D./D.R.I.

BEING A REPLAT OF PORTIONS OF SECTIONS 17 AND 20, TOWNSHIP 37 SOUTH,
RANGE 41 EAST, PLAT NO.1 ST. LUCIE GARDENS, AS RECORDED IN PLAT BOOK 1,
PAGE 35, PUBLIC RECORDS OF ST. LUCIE COUNTY (NOW MARTIN) COUNTY, FLORIDA




GENERAL NOTES

1. THERE MAY BE ADDITIONAL RESTRICTIONS THAT ARE NOT RECORDED ON THIS PLAT THAT MAY BE FOUND IN THE PUBLIC RECORDS OF THIS COUNTY.
2. NO SEARCH OF THE PUBLIC RECORDS HAS BEEN MADE BY THIS OFFICE.
3. BEARINGS SHOWN HEREON ARE BASED ON AN ASSUMED BEARING OF SOUTH 00°08'39" WEST ON THE WEST LINE OF SECTION 20, TOWNSHIP 37 SOUTH, RANGE 41 EAST, MARTIN COUNTY, FLORIDA, AND ALL OTHERS ARE RELATIVE THERETO.
4. THERE SHALL BE NO BUILDING OR ANY KIND OF CONSTRUCTION OR TREES OR SHRUBS PLACED ON DRAINAGE EASEMENTS.
5. THERE SHALL BE NO BUILDING OR ANY PERMANENT STRUCTURES PLACED ON UTILITY EASEMENTS.
6. BENCH MARK REFERENCE: BM: US-JB ELEV: 14.899=NGVD 1929
DESC: MARK IS A M.C. 2 1/2 INCH BRASS DISK STAMPED MARTIN COUNTY BM US-JB. MARK IS 270 FT. +/- EAST OF US-1 ON THE NORTH SIDE OF JENSEN BEACH BLVD. ON THE SOUTH SIDE OF A 28 X 28 INCH CONCRETE BASE FOR A LIGHT POLE JUST WEST OF THE ENTRANCE TO MOBIL STATION AT THE NORTHEAST CORNER OF US-1 AND JENSEN BEACH BOULEVARD.
7. PROPERTY LIES IN FLOOD ZONE "AH" (ELEV 17), AS SHOWN ON FEMA/FIRM MAP NUMBERS 120161 0020 C, DATED JANUARY 5, 1994 AND 120161 0132 C, DATED JANUARY 5, 1984.
8. THIS PLAT, AS RECORDED IN ITS GRAPHIC FORM, IS THE OFFICIAL DEPICTION OF THE SUBDIVIDED LANDS DESCRIBED HEREON AND WILL IN NO CIRCUMSTANCES BE SUPPLANTED IN AUTHORITY BY ANY OTHER FORM OF THE PLAT, WHETHER GRAPHICAL OR DIGITAL.

LEGEND:

P.B.	=	PLAT BOOK	U.E.	=	UTILITY EASEMENT
P.G.	=	PAGE	CH.	=	CHORD DISTANCE
Δ	=	DELTA ANGLE	C.B.	=	CHORD BEARING
□	=	PERMANENT REFERENCE MONUMENT L.B. 6793 SET	P.U.D.	=	PLANNED UNIT DEVELOPMENT
■	=	PERMANENT REFERENCE MONUMENT FOUND AS NOTED	D.R.I.	=	DEVELOPMENT OF REGIONAL IMPACT
○	=	PERMANENT CONTROL POINT L.B. 6793 SET	C/L	=	CENTERLINE
R	=	RADIUS	B.M.	=	BENCH MARK
A	=	ARC LENGTH	ELEV.	=	ELEVATION
O.R.B.	=	OFFICIAL RECORD BOOK	N.G.V.D.	=	NATIONAL GEODETIC VERTICAL DATUM 1929
D.E.	=	DRAINAGE EASEMENT (PRIVATE)	L.B.	=	LICENSE BOARD
			TYP.	=	TYPICAL

SHEET 3 OF 3



METES & BOUNDS, INC.
Land Surveyors & Planners
49 S.W. Flagler Avenue
Suite 2-A
Stuart, Florida 34994
Phone: 561-221-9093 Fax: 561-221-8984